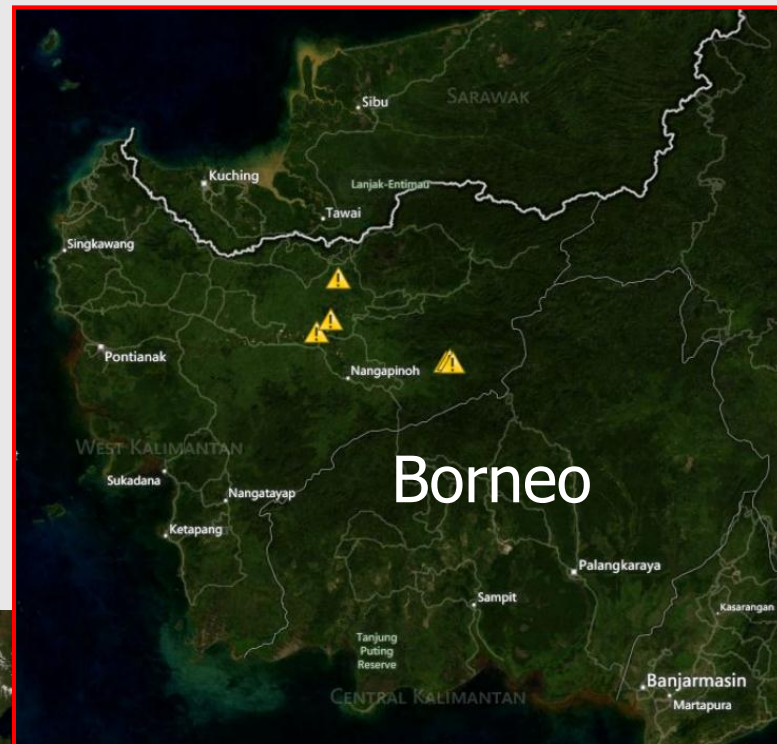




Hey! You would like to be an EarthWatcher?

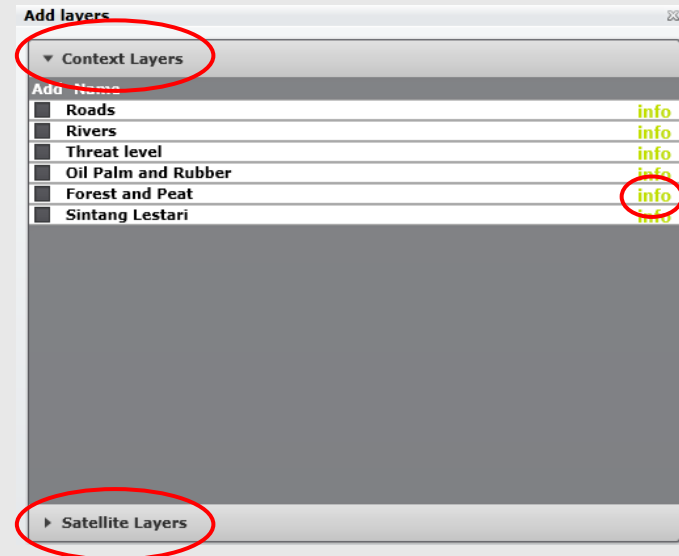
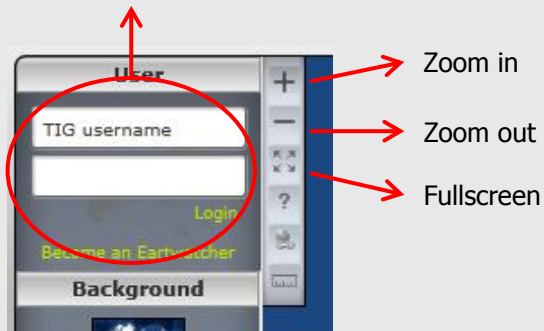
This will get you started!



EarthWatchers is the part of DeforestACTION where we monitor and protect forests from space with satellite images to combat illegal logging

1. First, **login** with your TakingITGlobal account username and password (if you are not registered, click on *Become an EarthWatcher*)
2. **Zoom** in to Borneo with the scrolling wheel of your mouse, or click the zoom button in the left corner
3. Use your mouse to **pan** across the map, to see what is in the surrounding areas
4. Click on **Add layers** in the left corner, and see what is there:
 - **Context Layers** with roads, rivers, etc.
 - and **Satellite Layers** with different types of satellite images
 - Try clicking on *info* next to the satellite layers, and check out the **wiki** information

Fill in your TakingITGlobal username, your password and click Login



- Each EarthWatcher monitors one parcel of forest, visualized as a **hexagon**. You can turn the *Hexagons* on and off on the left side. Also check out the *Alerted Land* and *Flags* that you can access
- Click again on the **Add layers** button and go to *Satellite Layers*. **Different types** of satellite images are available:
 - TrueColor: has colors that can be seen in the real world
 - Aerial: photograph taken from above
 - SAR: radar image (weather independent) in greyscale tones
 - EVI: density of green vegetation in grayscale tones
 - Infrared: temperature in grayscale tonesMore information about these image types can be found in the [wiki](#)
- Select this satellite image: **TSX SAR 19 May 12 SAR Astrium 05-23-2012** and zoom in to the top left corner of the image:



Different types of hexagons

Not checked

Landstatus OK

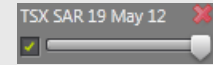
Landstatus Alert

Flag that contains a comment

Alerted Land



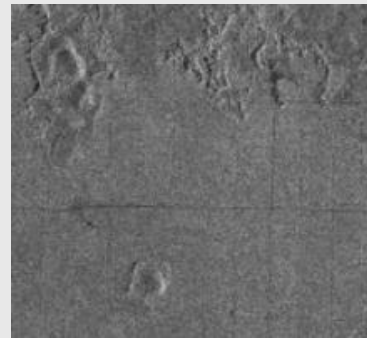
8. When you would like to compare differences between the two selected satellite images and/or the background, you can use the **transparency slider**:



9. As you can maybe see here, **deforestation** has occurred! The area that was once forested, is now a total flat deforested area. Also the **logging roads** that were used to transport the removed trees are clearly visible here



Before: forested area (True Color background)



After: trees are removed (SAR image)

10. If your parcel of forest is located here, you should change the status of your hexagon to **ALERT**. It will turn red, and an Alert sign will pop up, so others can confirm that they also see deforestation happening here

11. You can check the statuses of the parcels of others as well. When you disagree with the status that the person has set, you can choose to deconfirm. Make sure to leave a comment, so discussion can start, and you can help that person with the interpretation

"You should check out the new satellite layer!
It might change your status to ALERT!"

12. When many people in a certain area have set their landstatus to Alert and these statuses are confirmed by many others, the area can be field checked by the ground team and the Eco-Warriors in Borneo



Access this Getting Started manual again

Publish Map

Flag a location and leave a comment



Illegal logging is everywhere. Willie Smits shows ([amandacembal](#), 2012)

13. There is also a possibility to publish your map to the web, Facebook or Twitter, so more people can help monitoring the deforestation in Borneo!
14. If you need more help with EarthWatchers, check this: shout.tiged.org/dfahq/writing/
15. Or read about more general info here: dfa.tigweb.org/about/?section=earthwatchers

Congratulations, you are officially an EarthWatcher. Now you can make sure that local authorities will step in and protect the forests of Borneo!